



Sri Vedatraye developers Pvt. Ltd.

Jaya Enclave, Flat no - 103, BP Raju Marg,
Whitefields, Hitech city, Near Kothaguda Junction,
Hyderabad - 500 081.

Ph no : 040-40184346, 9492841512
E-mail : vedatraye99@gmail.com
Website : www.vedatraye.com

Architects

LEAD

Lakshmi Engineers & Architects
Himayath nagar, Hyderabad.
Ph no : 98490 55671

3D Architectural Visualization

I-View Designs
Bhagya nagar colony, Hyderabad
iviewdesigns@gmail.com

Note : This Brochure is only a conceptual presentation of project and not a legal offering. The promoters reserve the right to make changes in elevation, plans and specifications as deemed fit.



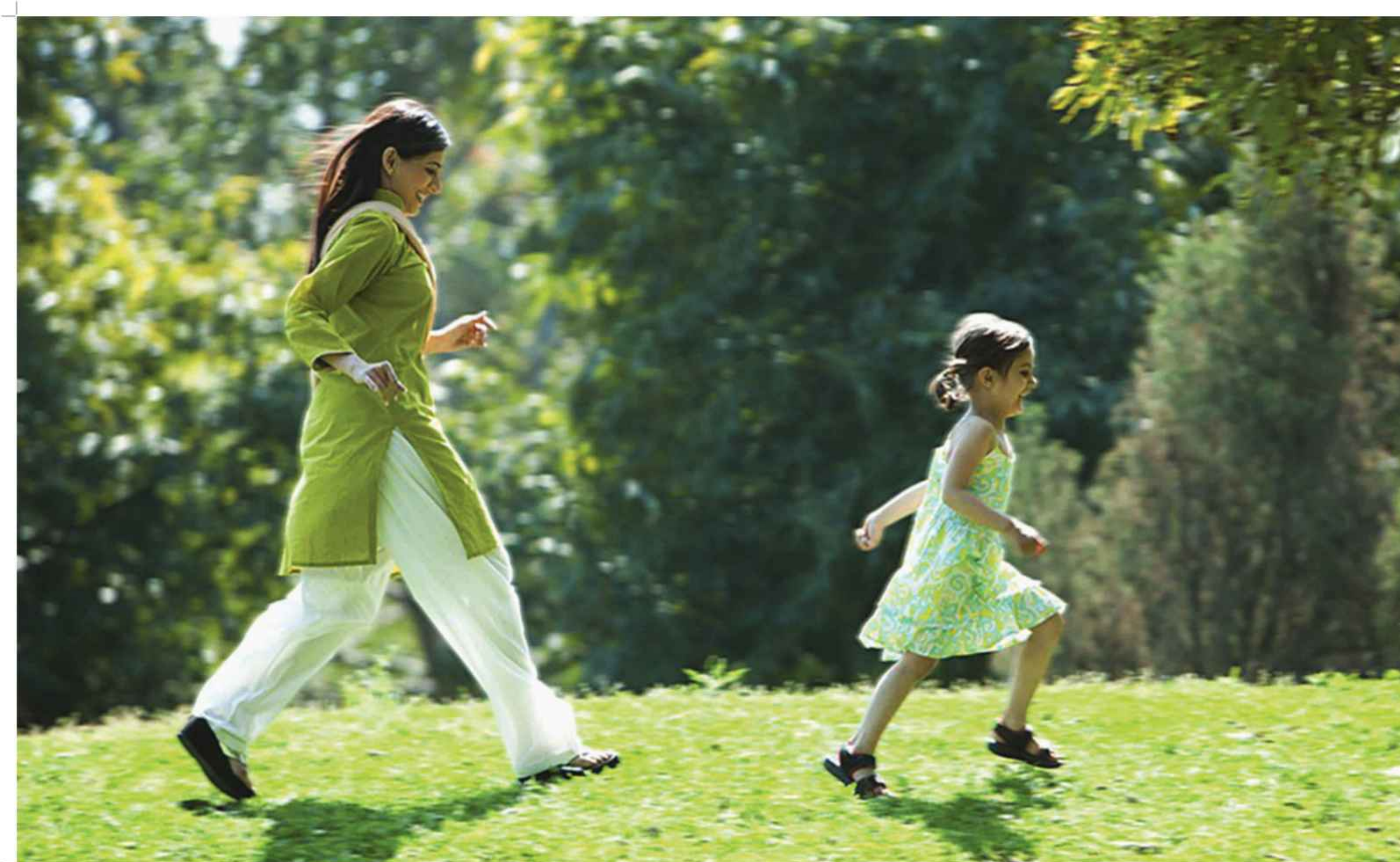
Designed by : J. View (+91-9849835519)

A Project by
Sri Vedatraye developers pvt ltd.

Blooms

The lap of luxury living





Blooms
The lap of luxury living



a refreshing residential **retreat** for upwardly mobile families

A Comfortable and luxurious home is a natural dream for every proud family. A beautiful home is a blessing in these stressful times, it can give you a well deserved rest, comfort and be the shelter for people of all ages. Everyone has a deep desire to live in lavish, spacious and provide all the comforts for family. BLOOMS creates a home for you and your family with love, comfort and beautiful memories.



Blooms

The lap of luxury living



appreciating **aesthetics** but not at the expense of functionality

The strikingly designed entrance gate spells splendor and unfolds the awesome world awaiting you. Stepping into BLOOMS gives a chance to live close to every convenience. With excellent connectivity, style, luxury and quality. These elegant villas with lush open spaces and world-class amenities offer a life you always aspired for. Discover the perfect place to raise a family and experience the living at its finest.



live a stress free **life** close to nature

The open area has been designed to let you and your family relax, indulge and enjoy quality leisure time. Even while luxuriating in the host of facilities on offer, we make you feel important and special. In essence, the premium project has been built to win the hearts of every person in the family at heart.

Highlights

- Splendid Main Entrance
- Clubhouse with Swimming pool
- Excellent Landscaping
- Children play area
- Underground Cabling
- Conference Hall
- Street lighting
- Rain water harvesting
- Waste disposal area
- Generator backup
- Solar fencing
- Intercom facility
- Round the clock security
- Parking space

Blooms
The lap of luxury living





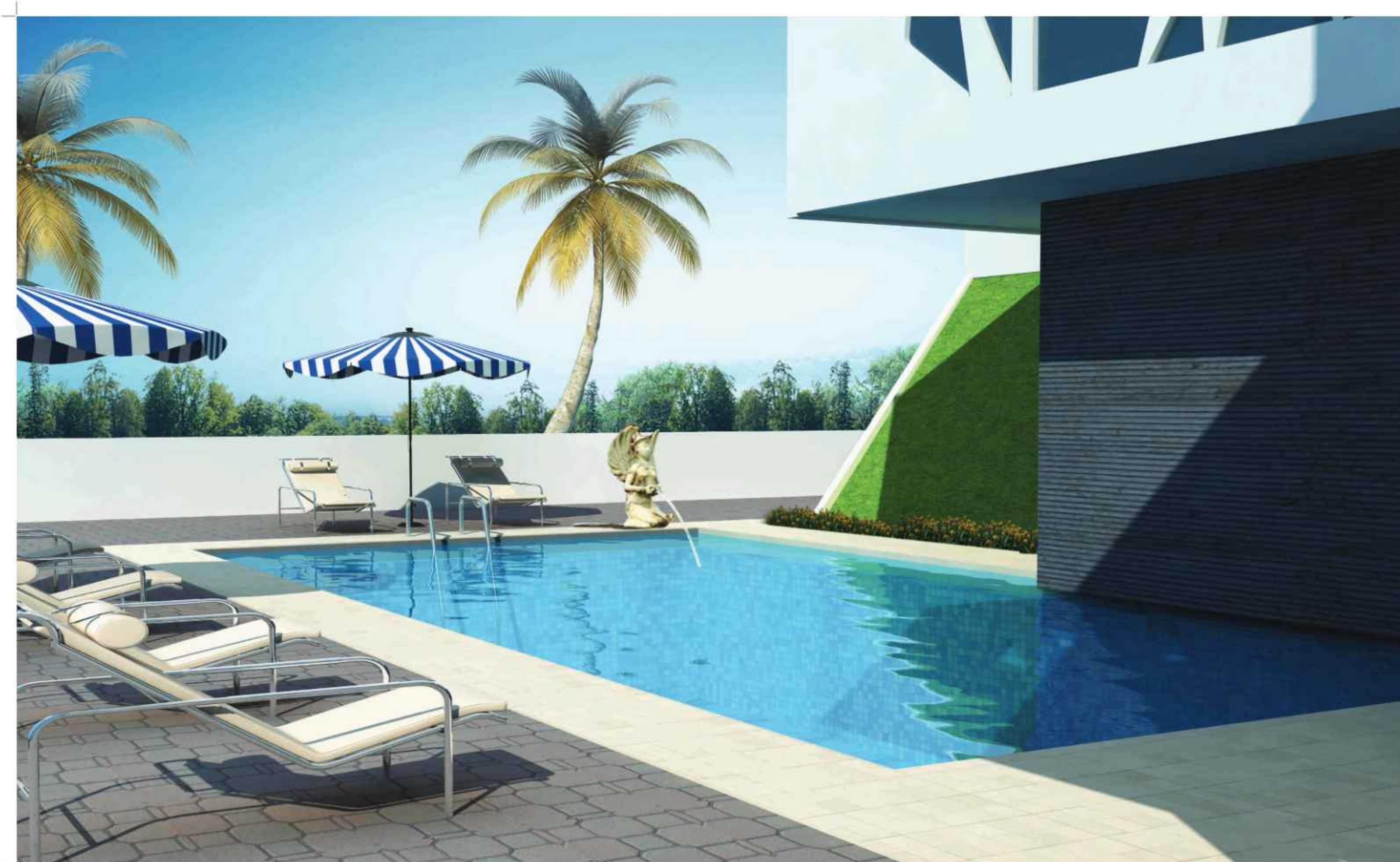
Blooms

The lap of luxury living



each aspect emphasizes **a taste** for fine details

When it comes to having a good time, BLOOMS offers an array of options to bide your time well. The entire enclave is defined by a unique tranquil ambience, and a range of features are available for your comfort, recreation and relaxation. Whether you are taking an early morning jog or chilling out in the pool, you are just a few feet away from your home, yet in a whole different setting. The surroundings and modern comforts add to the living experience.



celebrating new age **elegance** with discreet privacy

The eclectic ensemble of lifestyle amenities at BLOOMS, that are at once trendy and timeless, set the stage for chic living. sophisticated yet stylish, they are the key ingredients for a life of utmost convenience and unmatched comfort. The three floors of the clubhouse will take your breath away, everyday. At Blooms, you can carelessly rise above life strains and fall into the enchanting world of the classy clubhouse. Where you will feel like riding on air on the many relaxing and rejuvenating that are designed to put you at ease, instantly.



The *Bloom Club*

Features

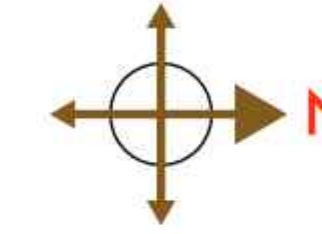
- An exclusive clubhouse spanning across 7686 sft
- Multi-purpose hall with kitchen
- Indoor games
- Yoga / Aerobics studio
- Gym
- Park and play area are abuzz with games options for children

Blooms
The lap of luxury living





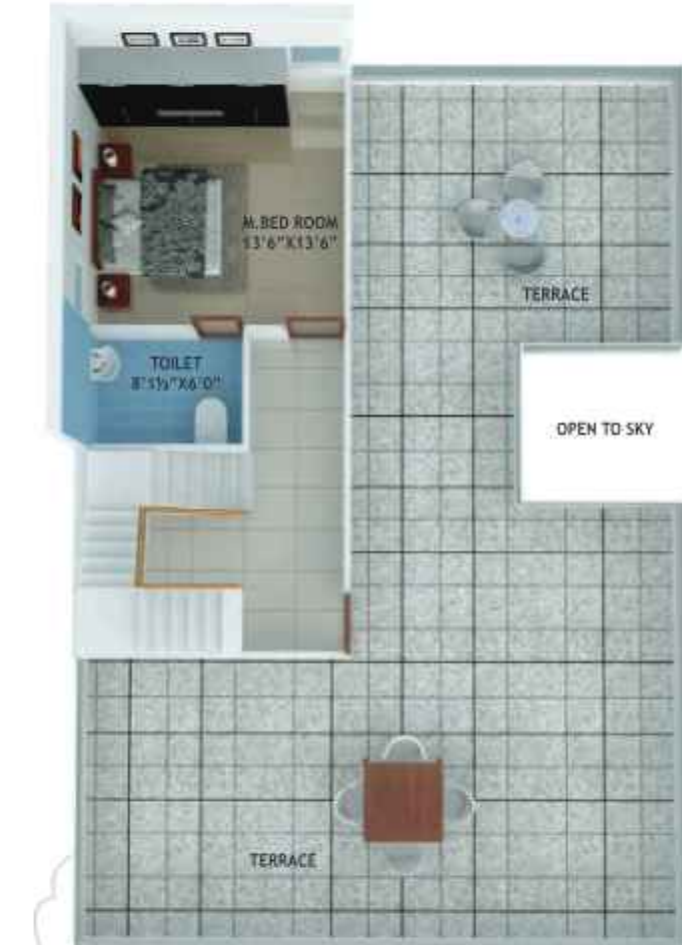
EAST FACING VILLA PLAN



GROUND FLOOR PLAN



FIRST FLOOR PLAN



SECOND FLOOR PLAN

AREA STATEMENT

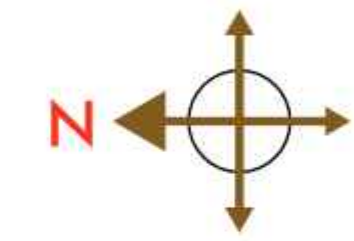
Plot Area	: 411 sq.yds
Ground floor	: 1447 sft
First floor	: 1447 sft
Second floor	: 468 sft
Total Area	: 3362 sft



WEST FACING VILLA PLAN



GROUND FLOOR PLAN



FIRST FLOOR PLAN



SECOND FLOOR PLAN

AREA STATEMENT

Plot Area	: 411 sq.yds
Ground floor	: 1439 sft
First floor	: 1439 sft
Second floor	: 464 sft
Total Area	: 3342 sft



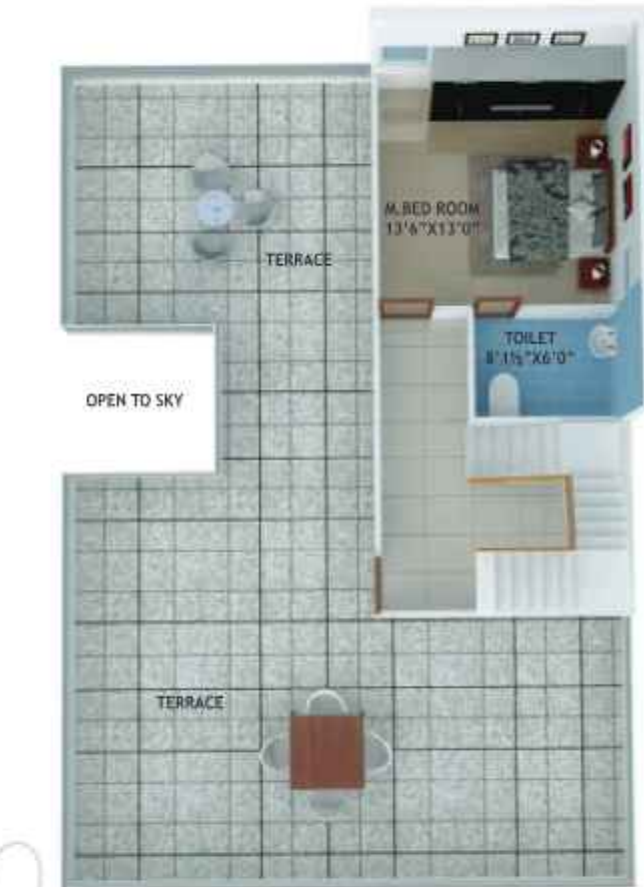
NORTH FACING VILLA PLAN



GROUND FLOOR PLAN



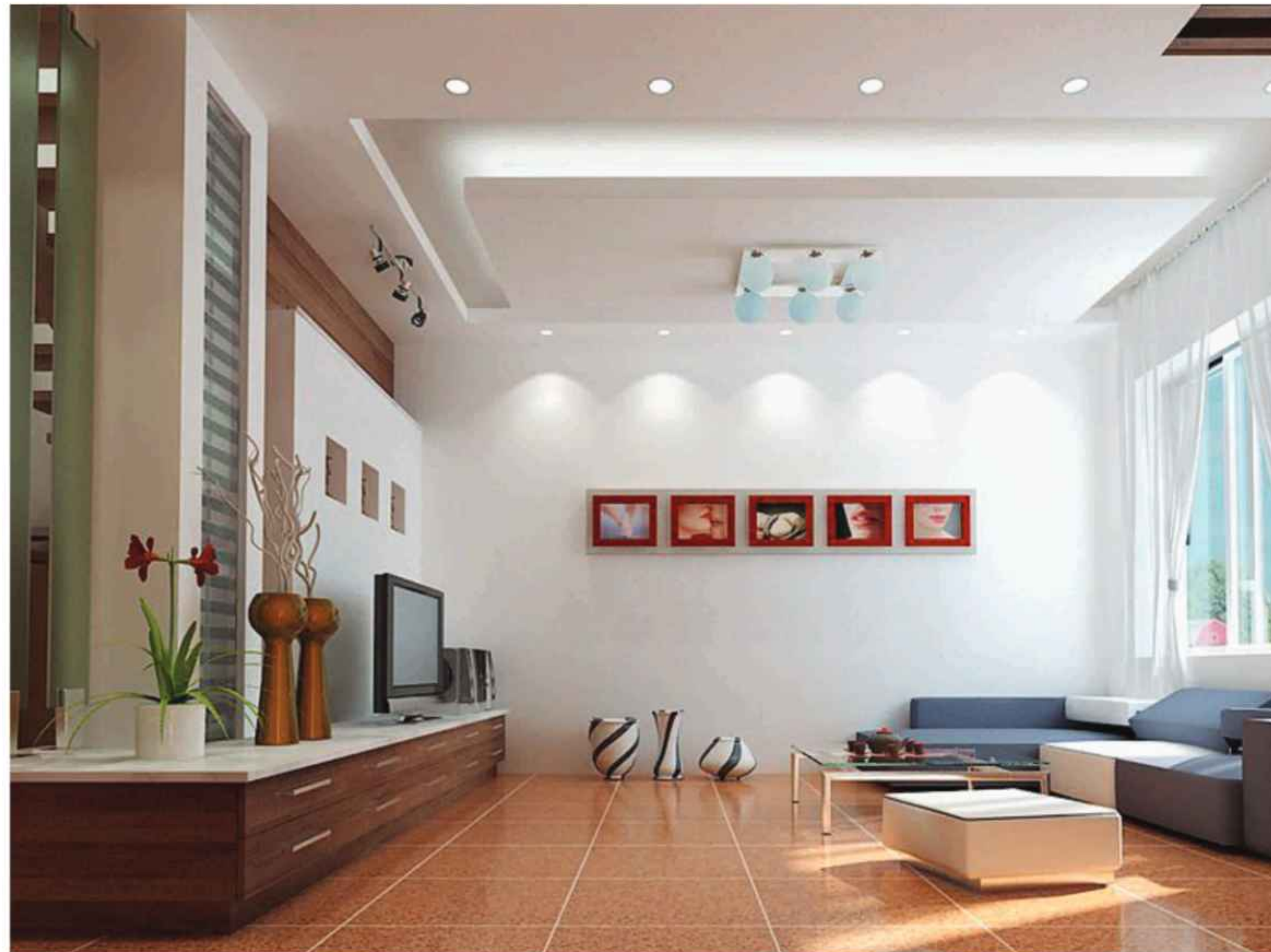
FIRST FLOOR PLAN



SECOND FLOOR PLAN

AREA STATEMENT

Plot Area	: 411 sq.yds
Ground floor	: 1413 sft
First floor	: 1413 sft
Second floor	: 457 sft
Total Area	: 3283 sft



Specifications

FOUNDATION & STRUCTURE

Seismic proof RCC framed structure. 6" external & 4" internal walls with brick work.

PLASTERING

Internal / External : 2 coats of plastering in cement mortar 1:6.

DOORS & WINDOWS

Main door : Teak wood frame with moulded paneled shutter doors with melamine polishing & reputed make fittings.

Internal doors : Indian Salwood / Machine made from with moulded flush shutter door with painting / laminated & reputed make Hardware fittings.

Windows : UPVC windows system with float glass with suitable finishes as per design with provision for mesh track.

PAINTING

Internal : Smooth putty finish with Acrylic emulsion paint of reputed make, over a coat of primer.

External : 2 coats of texture finish with 2 coats of exterior emulsion.

FLOORING

Living / Bedrooms / Dining / Kitchen : Vetrified tile (600mm X 600mm) flooring in living, drawing, dining, bedrooms & kitchen shall be of reputed make.

Staircase : Granite stone flooring.

Toilets : Premium quality anti-skid ceramic tile flooring in toilets, balconies & utility.

KITCHEN

Premium quality polished granite with stainless steel sink shall be of reputed make. Provision for water inlet near kitchen sink for water purifier.

Glazed ceramic tiles dado up to 2'-0" height above the kitchen platform of reputed make.

ELECTRICAL & COMMUNICATIONS

PVC insulated wires of reputed make. Premium quality distribution boards & MCB's shall be of reputed make.

Modular electrical switches of reputed make. Provision for television cable in living & master bedroom.

Provision for telephone point in living & bedrooms. Provision for chimney, refrigerator, microwave & exhaust fan in kitchen.

Provision for split AC points in all the bedrooms.

WALL CLADDING

Bathrooms : Glazed ceramics tiles dado up to 7'0" height of reputed make.

Utilities : Glazed ceramics tiles dado up to 3'0" height of reputed make.

PLUMBING AND SANITARY FIXTURES

White color single unit EWC's and wash basins in all toilets shall be of reputed make.

Hot & cold water mixer with shower. Provision for geyser in all bathrooms, All C.P. fitting are of reputed make.

HARDWARE

Premium quality locks of make for main door. Premium quality cylindrical locks with key & SS hardware accessories for bedroom doors.

Premium quality powder coated aluminium door accessories for balcony & utility doors.

Blooms

The lap of luxury living



Location plan



Experience an enjoyable change of scene as you drive down to BLOOMS, a unique and fully secure villas. The project is centrally located near all facilities within a few minutes drive.

Location Highlights

- Kokapet IT SEZ - 10 Minutes drive
- ICFAI Campus - 2 Minutes drive
- International Schools - 5 to 10 Minutes drive
- Outer ring road - 5 Minutes drive
- CBIT - 10 Minutes drive
- Ocean park - 10 Minutes drive
- IT companies and Tech parks - 15 Minutes drive
- Airport - 25 Minutes drive
- Continental Hospital - 15 Minutes drive
- ICICI Head Office - 15 Minutes drive
- Financial District - 15 Minutes drive

Blooms
The lap of luxury living



Earning goodwill, spreading trust....



An abode that impresses is a result of good design sense, meticulous planning and practical thinking. Sri Vedatraye developers Pvt. Ltd., imbibes these values and builds them in every project. So that buyers and prime property people are delighted. Come join our family of satisfied home buyers and smile!